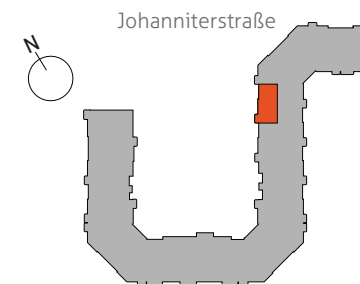
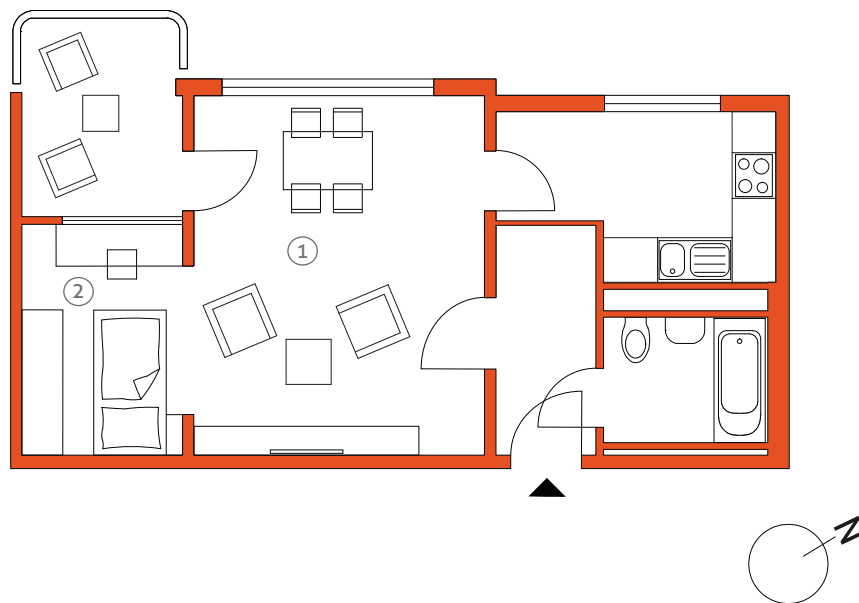


1,5-ZIMMER-WOHNUNG / 1,5-ROOM-APARTMENT

Johanniterstraße 6, 4.OG, WOHNUNG 112 / 4TH FLOOR, APARTMENT 112



① Zimmer 1 / Room 1	18,28 m ²	Flur / Hall	3,84 m ²
② Zimmer 2 / Room 2	6,53 m ²	Loggia / Loggia (50%)	2,30 m ²
Küche / Kitchen	7,15 m ²		
Bad / Bathroom	3,41 m ²		
		GESAMTFLÄCHE	41,51 m²
		Total living space	